

# ETECH RESOURCES

## RARE EARTH ELEMENTS IN NAMIBIA



JULY 2024 | SUMMARY



TSXV: REE | FSE: K2i





# Disclaimer

This document (“Presentation”) has been prepared by E-TECH RESOURCES INC., a public company (“Company”) in connection with a presentation to prospective investors.

## Regulatory Review

The contents of this Presentation have not been reviewed or approved by any securities or financial regulatory authority, and no regulator in any jurisdiction has assessed the merits of securities of the Company. Any representation to the contrary is an offence. Investment in the Company is a risky investment. There are limitations on the ability to sell securities of the Company. Funds available to the Company may not be sufficient to accomplish its proposed objectives. You are advised to consult with your own legal and financial advisors.

## Reliance

Although reasonable care has been taken to ensure the facts stated in this Presentation are accurate and that the assumptions expressed are fair and reasonable, the information in this Presentation, which includes certain information drawn from public sources, does not purport to be comprehensive, and has not been independently verified. No representation or warranty, express or implied, is or will be made and to the fullest extent permitted by law, neither the Company nor any of its representatives, officers, employees, advisers or agents shall accept any liability whatsoever for the accuracy, reliability or completeness of the information or opinions contained in the Presentation (including any subsequent revisions or amendments) or of any other written information or oral information made or to be made available to any interested party or its advisers. The information in this Presentation is subject to updating, completion, revision, further verification and amendment. In providing this information, the Company undertakes no obligation to provide the recipient with access to any additional information or to update this information or to correct any inaccuracies therein which may become apparent. No person other than Company is authorised to give any information other than as contained in this document.

## No Offer

This Presentation is not, and under no circumstances is it to be construed as, an offer to the public, a prospectus or advertisement of securities. The Company’s securities will be sold only in those jurisdictions and to those persons where and to whom they may be lawfully offered for sale and therein only by persons permitted to sell or issue such securities. Securities of the Company will be issued only under exemptions from the prospectus and registration requirements of applicable securities laws. Each purchaser is advised to consult with their own legal counsel regarding the prospectus exemptions of applicable securities laws, the consequences of purchasing the securities pursuant to such exemptions and the applicable hold periods which will apply to the securities.

Securities of the Company will be issued only under exemptions from the prospectus and registration requirements of applicable securities laws. Each purchaser is advised to consult with their own legal counsel regarding the prospectus exemptions of applicable securities laws, the consequences of purchasing the securities pursuant to such exemptions and the applicable hold periods which will apply to the securities.

The Securities have not been and will not be registered under the US Securities Act of 1933, as amended or the securities laws of any state of the United States and may not be offered or sold in the United States or to or for the account or benefit of U.S. persons except pursuant to an exemption from such registration.

## Forward Looking Information

Statements in this Presentation or otherwise regarding the Company’s or its management’s intentions, believes or expectations, or that otherwise speak to future events, are “forward-looking statements”. Forward-looking statements may be identified by terminology including “could”, “may”, “will”, “should”, “expect”, “plan”, “except”, “project”, “estimate”, “predict”, “anticipate”, believes”, “intends” and the negative of these terms or other comparable terminology. Such statements are based on the Company’s current expectations and involve a number of risks, uncertainties and assumptions and should not be considered as guarantees of future performance. These statements include, without limitation, statements about the Company’s market opportunity, growth strategy, competition, expected exploration and development activities, future acquisitions and investments, the adequacy of the Company’s available cash resources, the availability of the future cash resources, market supply and demand estimates, technology assumptions and sustainability targets. Future results and developments discussed in these statements may also be affected by numerous factors and risks beyond the Company’s control, including political or economic conditions in areas where the Company operates, trade and regulatory matters, general economic conditions (including commodity prices), and other factors and risks. Readers are cautioned not to place undue reliance on these forward-looking statements. The Company does not undertake to update, revise or correct any of the forward-looking information.

## Confidentiality

This Presentation (including its contents) is confidential and is for distribution only to a limited number of companies or persons and their professional advisers selected by the Company and its financial adviser for that purpose. It is not intended to be distributed or passed on, directly, or indirectly, to, and may not be read by, any other persons without the express written consent of the Company. This Presentation is being supplied to you solely for your information and may not be copied, reproduced, further distributed to any other person or published, in whole or in part, for any purpose.

This Presentation has been delivered to interested parties for information only and on the express understanding that they shall use it only for the purpose set out above. The distribution of this Presentation shall not be deemed to be any form of commitment on the part of the Company to proceed with any transaction.

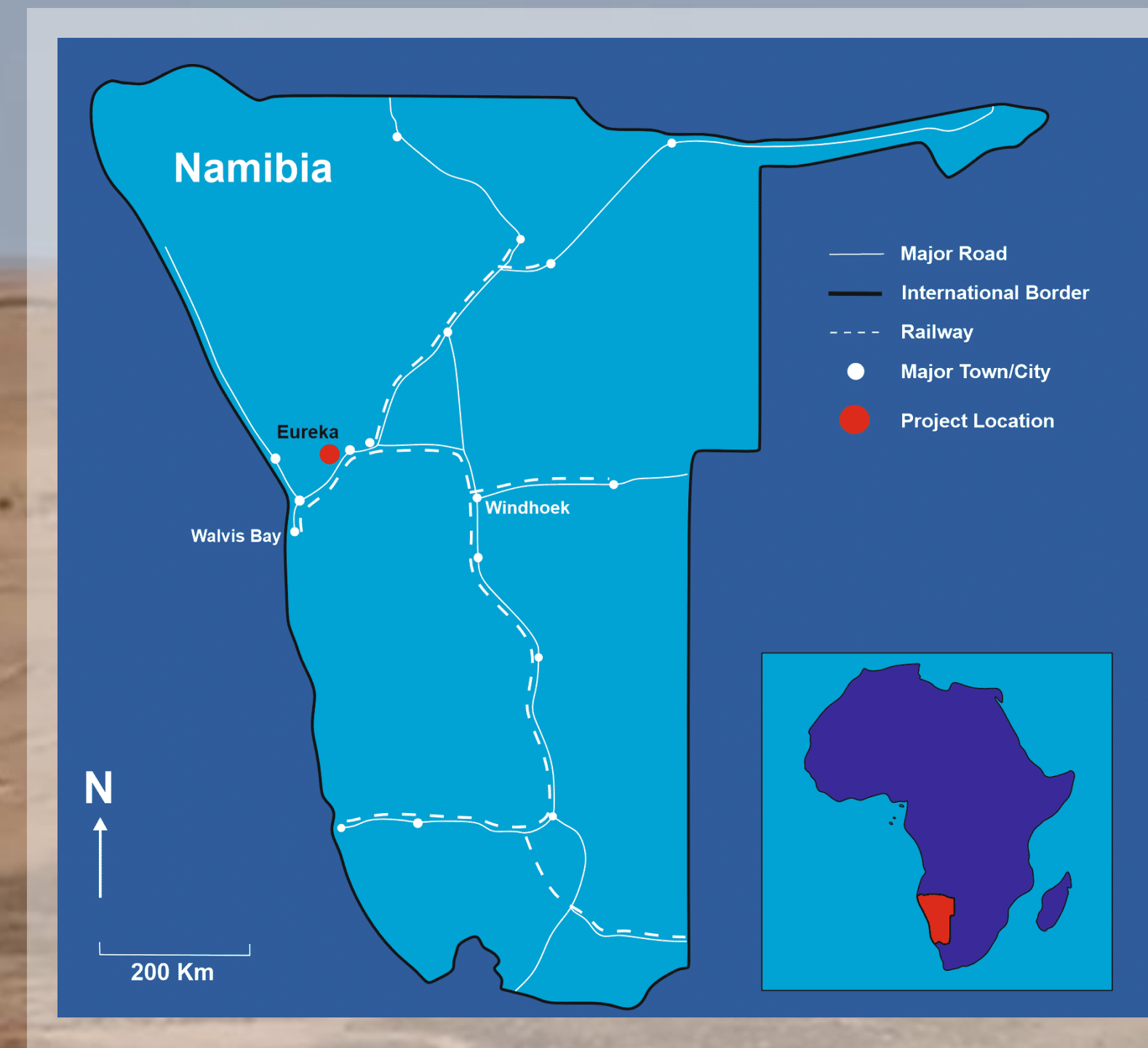
## Technical Disclaimer

Keith Webb is a Consulting Geologist who holds a BSc Honours in Applied Geology from the University of Strathclyde, Scotland. He has been involved in mining and exploration geology for the past 37 years and has extensive experience within West, East and Southern Africa, covering a range of commodities including Gold, Copper, Nickel, Uranium and Diamonds. Mr Webb is a member of the Australian Institute of Geoscientists (AIG) (membership number 3688) and qualifies as a Qualified Person for the purposes of National Instrument 43-101.



# Eureka Rare Earth Element Project

- Course-grained monazite
- Light rare earth elements
- Mature mining district
- Preliminary processing test work



## INFRASTRUCTURE

Focus on  
Critical Rare Earth Elements

**Nd & Pr**

- FLAT & SPARSELY POPULATED
- 2KM TO HIGHWAY
- 10KM TO RAILWAY
- 140KM TO CONTAINER PORT
- ACCESS TO WATER & ELECTRICITY

Member of

**RARE EARTH ALLIANCE NAMIBIA (REAN)**



**NAMIBIA**  
CRITICAL METALS INC.  
(Formerly Namibia Rare Earths Inc.)

**E TECH**  
RESOURCES

Ondoto Rare Earth  
(Pty) Ltd.



# 2023 highlights



Drill core laid out for core viewing at E-Tech's Eureka project in December 2023

Comprehensive  
data analytics  
program initiated

Regional Geochem  
program  
completed over  
entire EPL 6762  
structure

UAV Ultra-high-  
resolution survey  
over known  
mineralization

**New exploration  
model, validated  
by historic drill  
data**

**Early results  
from ground  
truthing  
(2024)**



EPL 6762

Original

Total Area of EPL 6762	Area (Zone 1-4)	Dome Area (~1/3)
3,474 ha* (34,737,800 m2)**	~1 km2	~20.7 km2

Mar 28, 2023

NR: E-TECH RESOURCES  
EXPANDS  
LANDHOLDINGS AT THE  
EUREKA PROJECT

EPL 8748

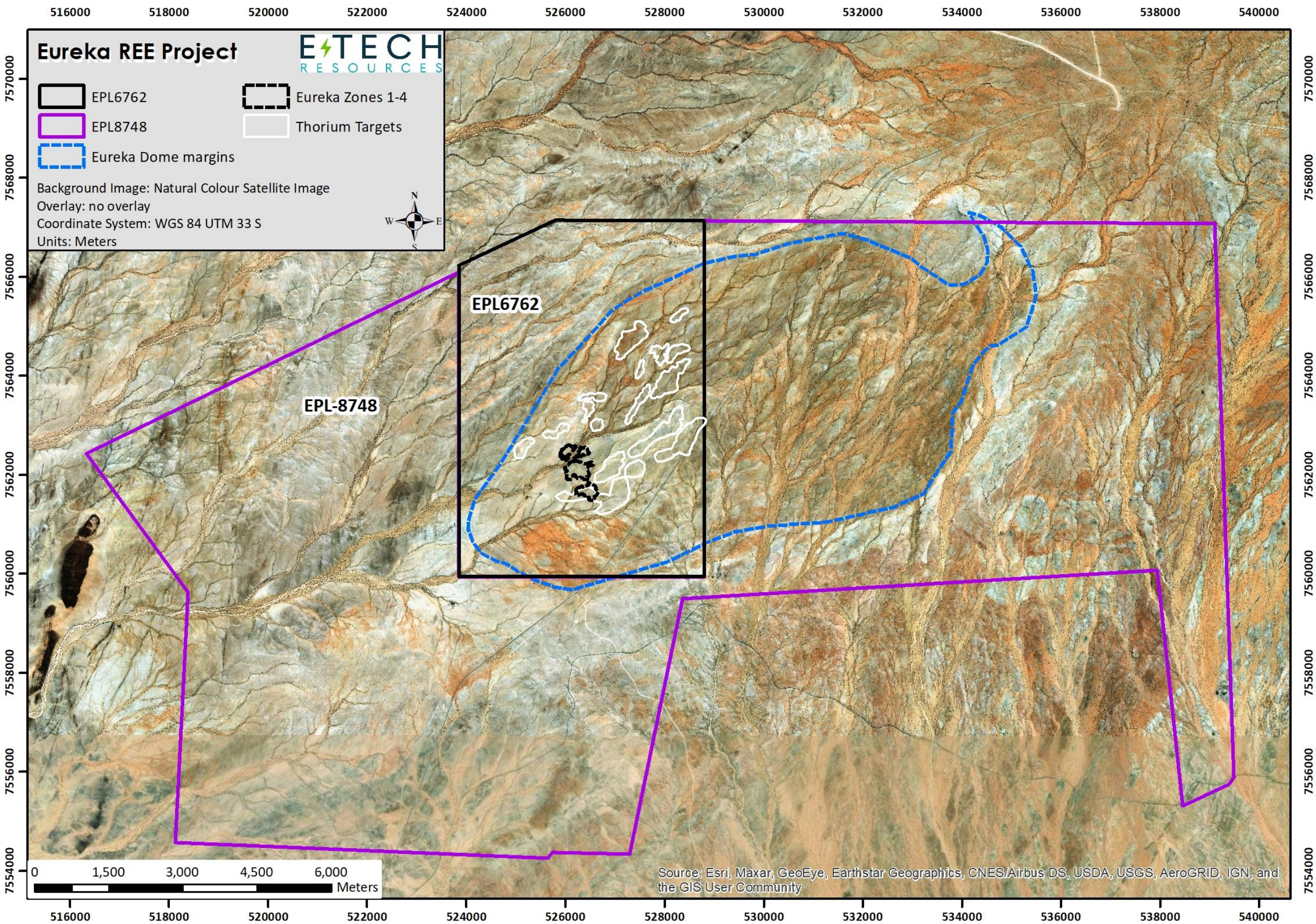
Newly  
Acquired

Total Area of EPL 8748	Dome Area (~2/3)
16,520 ha* (165,200,000 m2)**	35.3 km2

COMBINED

Total Area of EPL 6762 & 8748	Total Area of the Eureka Dome
19,994 ha* (199,940,000 m2)**	~ 56km2

\* Rounded to nearest 1 | \*\* Rounded to nearest 100





# Metallurgy

## ORE BENEFICIATION

Chemical-free  
beneficiation to meet the  
technical specifications  
of processors

AT EUREKA  
OFF THE SHELF EQUIPMENT  
BASED ON EARLY-STAGE BULK SAMPLING &  
BENCH-SCALE TESTING OF OUTCROP MATERIAL

NO XRAY SORTING      NO HARSH CHEMICALS      NO FLOTATION REQUIRED

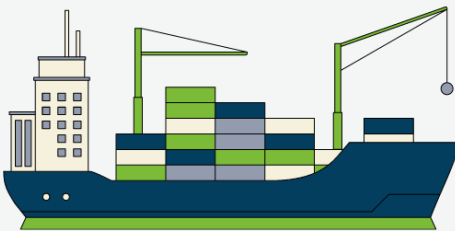
>65%

RECOVERY

>60%

TREO GRADE

OF >97% MONAZITE CONCENTRATE  
after 1<sup>st</sup> pass using  
Gravity & Magnetic Process



AMENABLE  
SHIPPING OF  
PRODUCT  
Due to low  
radioactive levels



POTENTIAL  
LOW COST OF  
PRODUCTION  
RELATIVE TO  
COMPETITORS  
As confirmed by  
SGS Mineral Services



MONAZITE IN  
HOST ROCK



GRAVITATIONAL  
CONCENTRATION



MAGNETIC  
SEPARATION



MONAZITE  
CONCENTRATE



# Board & Management Team



**CHRIS DRYSDALE**  
INTERIM CEO | NAMIBIA

Experienced professional with international experience in the mineral and exploration industry. Currently serves as CEO for Antler Gold Inc.



**ROB RANDALL**  
CFO | CANADA

Rob has extensive financial experience working within many African countries overseeing all financial aspects of resource exploration and production activities.



**JIM MEGANN**  
CHAIR | CANADA

Jim is Managing Director of Numus Financial a Director of Torrent Capital, a publicly traded investment issuer; Director of OARO; and a Director of Sona Nanotech and brings extensive capital markets experience



**KEN MARSHALL**  
DIRECTOR | CANADA

Extensive experience in the Information Technology and Telecommunications Sectors, having served in various positions at Rogers Communications throughout his career.



**JOHN PHILPOTT**  
DIRECTOR | CANADA

Founder and CEO of CanAm Physician Recruiting Inc. CanAm has been the leading physician recruitment and placement company in the Canadian and international markets for more than two decades.



**PROF FRANCES WALL**  
DIRECTOR | UK

Professor of Applied Mineralogy at Camborne School of Mines, University of Exeter. 30+ yrs experience researching the geology and process mineralogy of global rare earth deposits and practically linking exploration stage studies to responsible sourcing outcomes. Chair of the British Geological Survey Science Advisory Committee. Member of the UK Critical Minerals Expert Committee.

## IN-COUNTRY CAPACITY

- Experienced geology team
- Local employees
- Environmental and
- HSE compliance



**DENNIS BILLE**  
SENIOR GEOLOGIST



**SENSIKUS ANGULA**  
GEOLOGIST



**ERASTUS IIYAMBO**  
GEOLOGIST



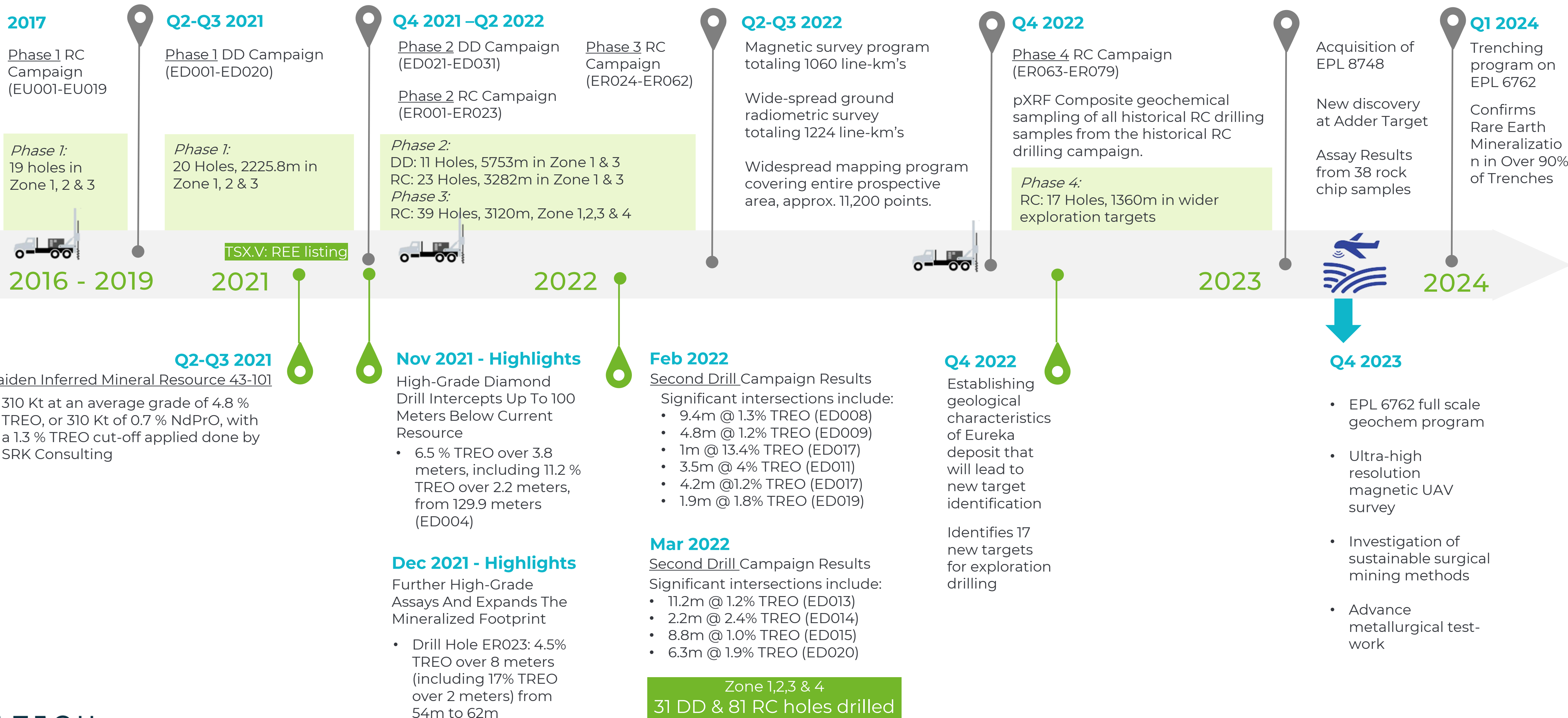
**TUWILIKA NGHIPALENDJILA**  
JUNIOR GEOLOGIST



# Exploration Activities

## Legend:

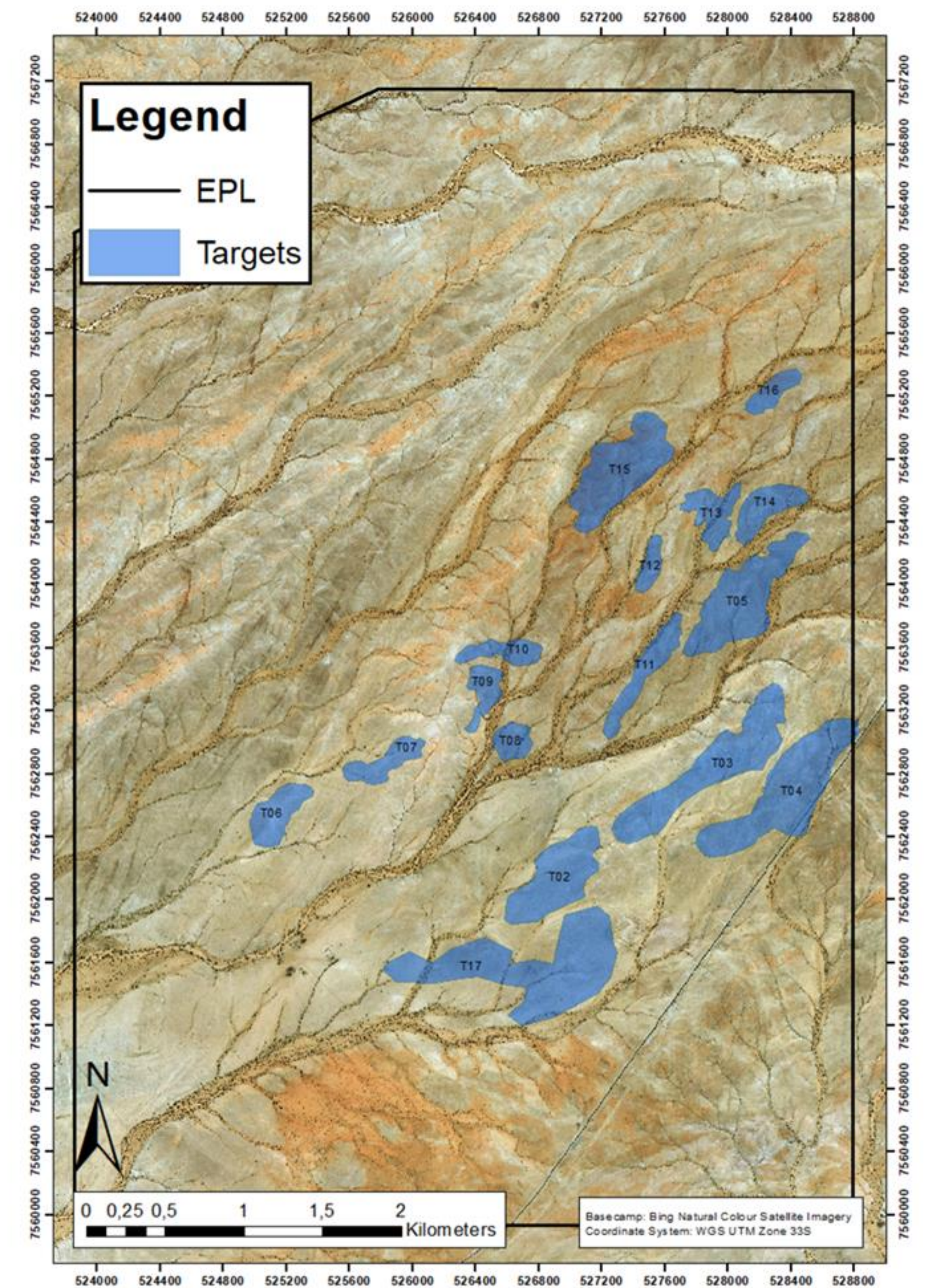
DD – Diamond Drilling  
RC – Reverse Circulation





# H1 2023 Exploration

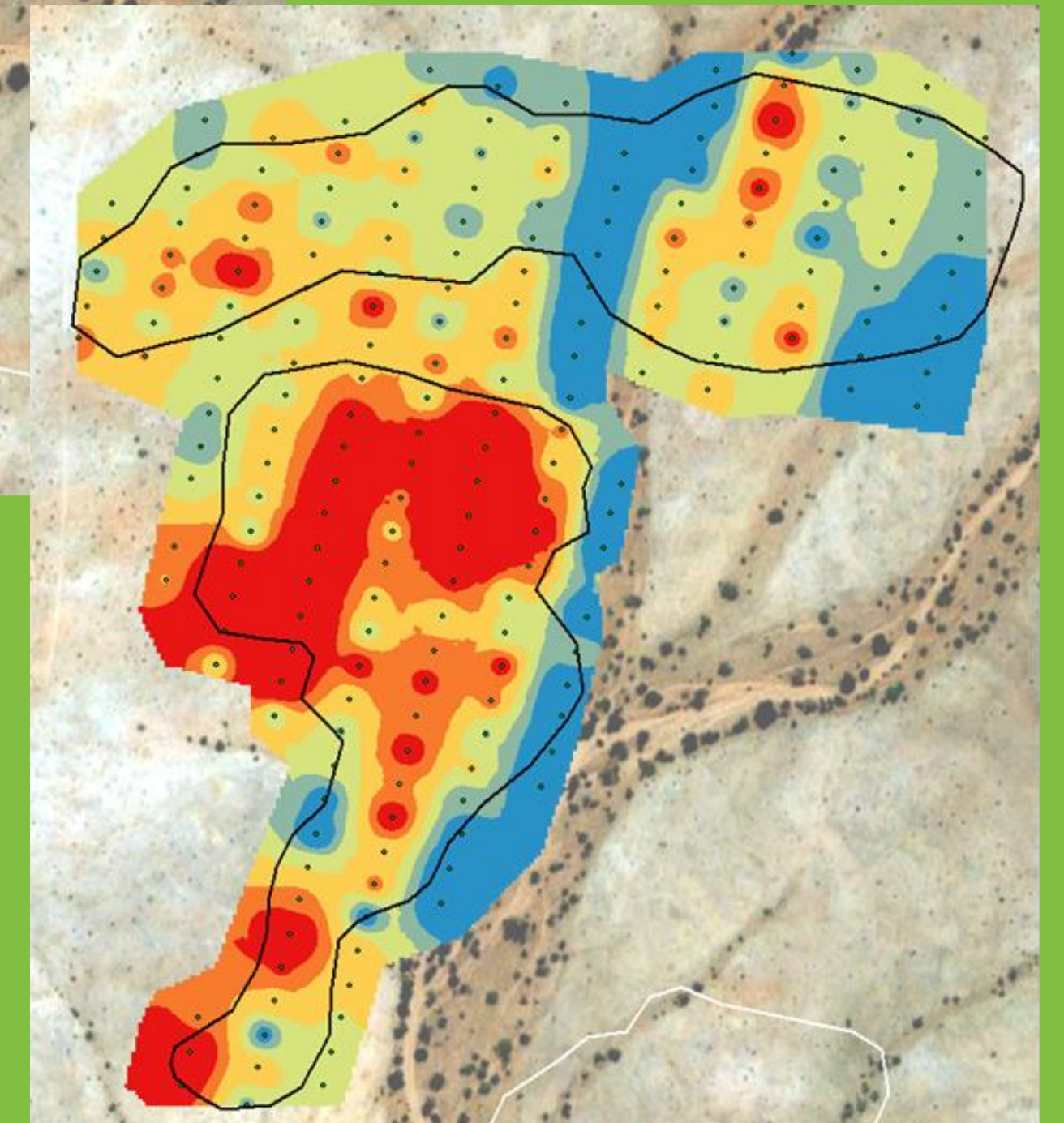
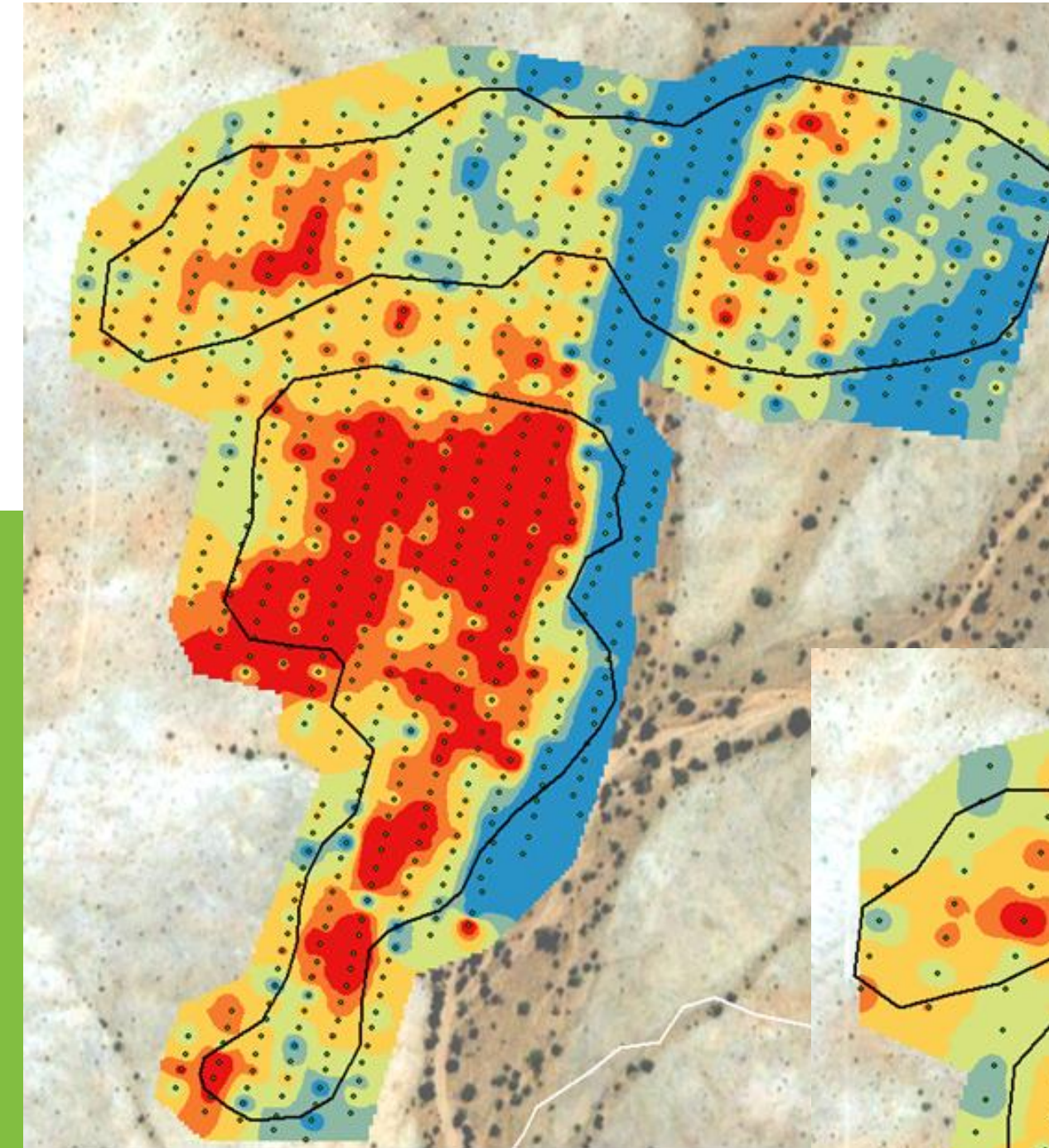
- Targeting deposits similar to discovery zones 1-3
- Thorium signatures used as key pathfinder (Radiometric anomalies)
- Higher density sampling grid over small targets (10X20 meter spacing)
- Samples analyzed in the field





## Q3 Exploration Program review

- Adopted an EPL wide exploration approach
- Adjusted Geochem sampling density
- Changed sampling and analysis procedures
- Switched to REE Geochem signatures as key targeting pathfinder
- Introduced UAV Ultra-high resolution Aeromagnetic survey
- Added technical support (Gecko Exploration)



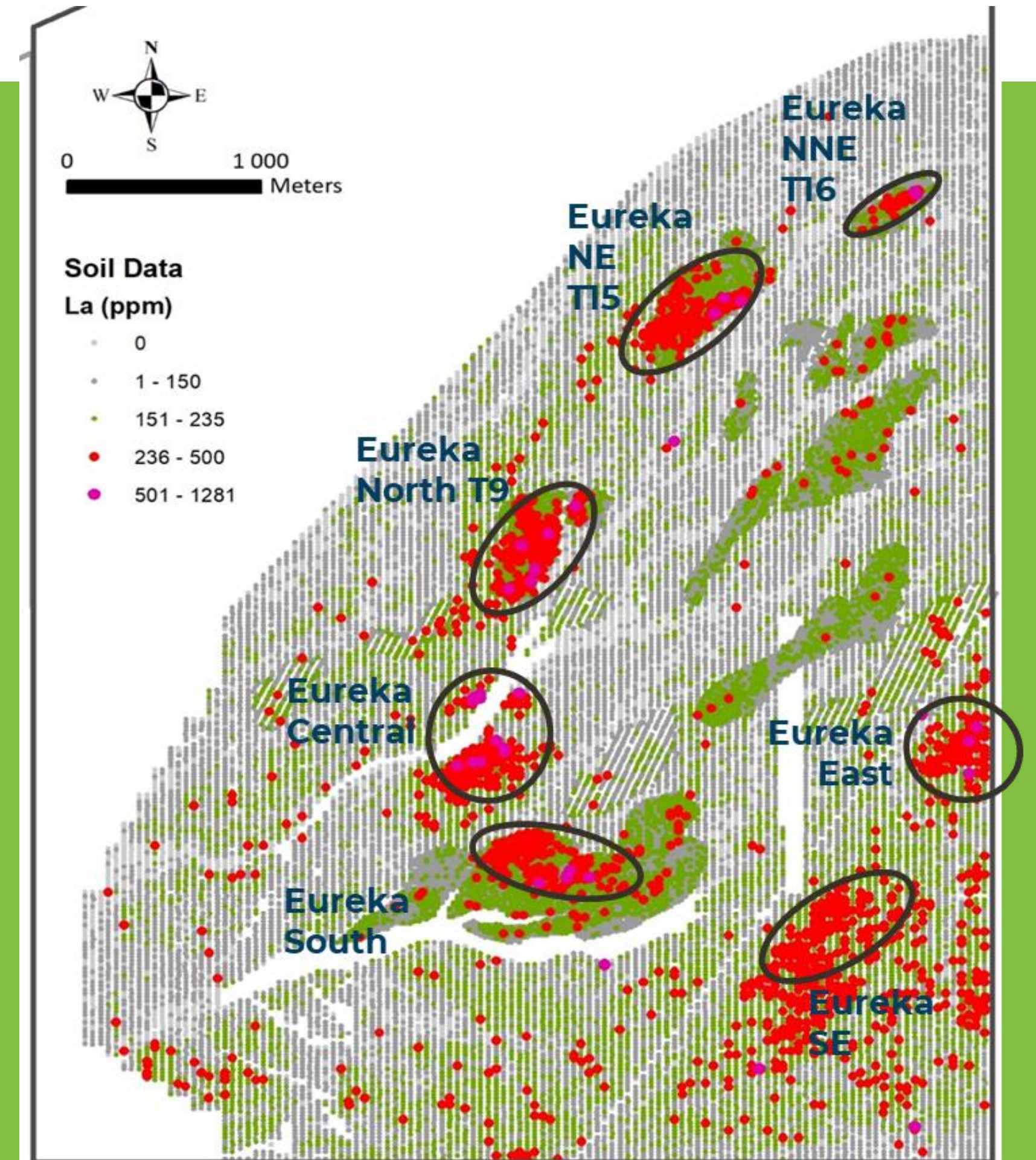


# Q4 Exploration results

- Complete coverage of Eureka Dome structure on EPL 6762
- EPL scale perspective
- Integration of high resolution aeromagnetic
- New exploration model validated by data analytics
- New exploration targets



Soil samples for pXRF analysis at Karibib office





# High-resolution, UAV-based magnetic surveys

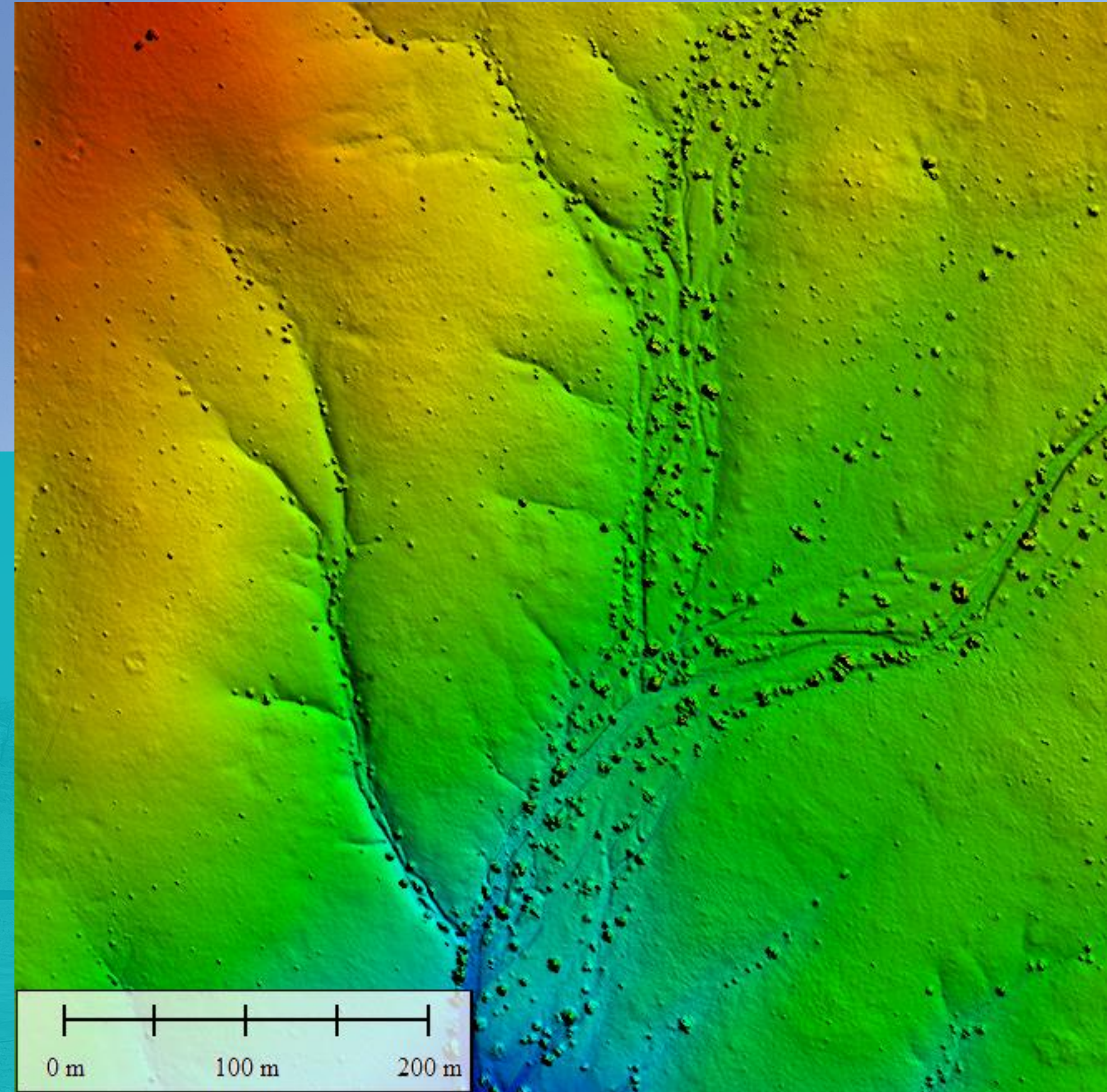


## Objectives

- Conduct **high-resolution, UAV-based magnetic surveys.**
- A **limited survey over three small, selected targets** to test methods in detecting zones which host monazite mineralization assuming magnetic responses from several magnetite and pyrrhotite-hosting lithologies.

## Topography survey includes:

- Fixed wing VTOL flight to produce a topography map.
- High Resolution Ortho, DSM (Digital Surface Model) and DTM (Digital Terrain Model) to plan flight paths.



High-resolution topography map to assist with obstacle avoidance and flight path planning



# Eureka Project

## Magnetic survey highlights:

- Optically pumped magnetometer
- 1000Hz Sample rate
- 10m/s max => sample every 1cm
- 20,000nT to 100,000nT range

## Magnetic processing before final maps generation:

- Diurnal correction
- IGRF
- Attitude compensation
- Levelling and Micro-levelling
- Gridding

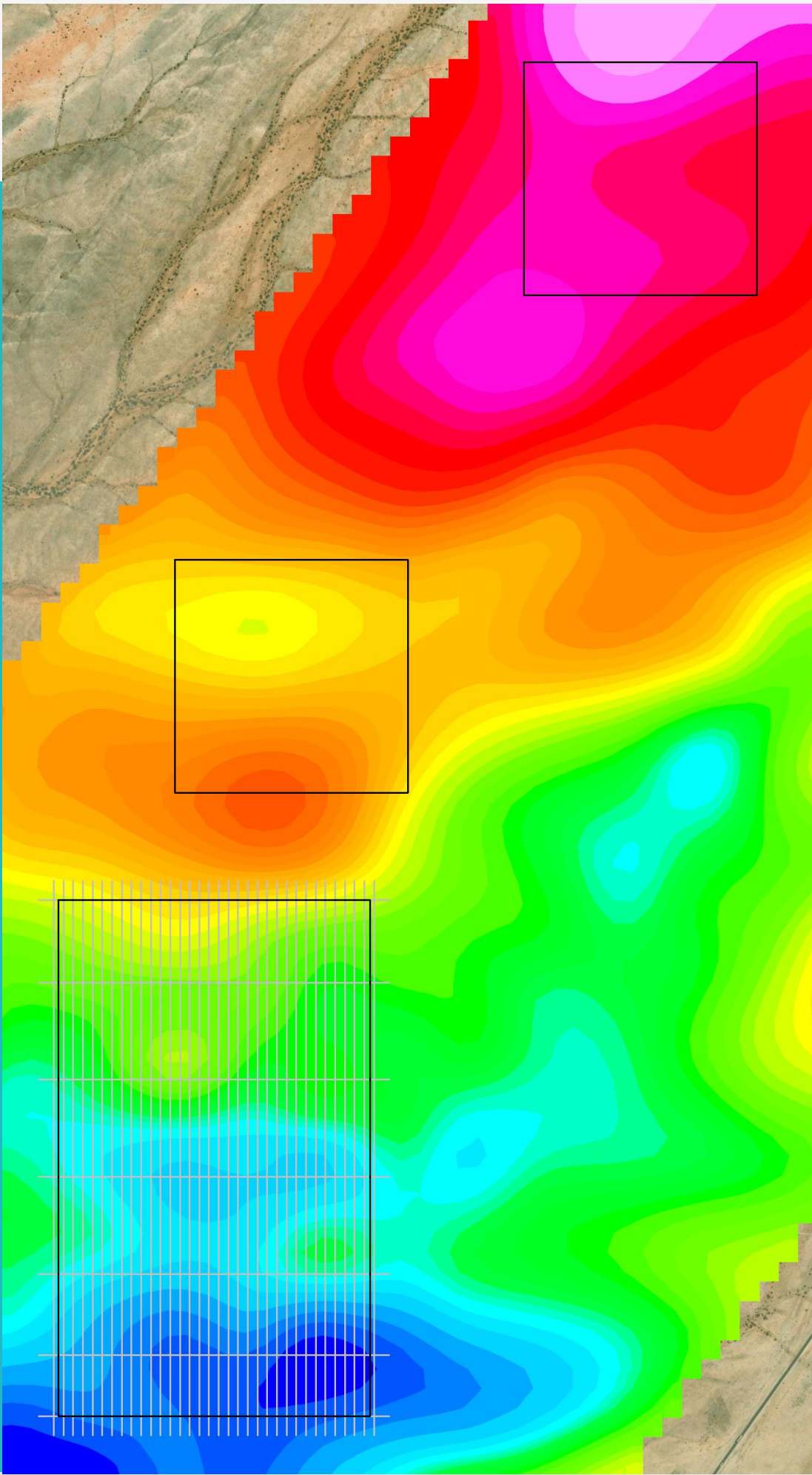


Magnetic sensor suspended beneath the drone



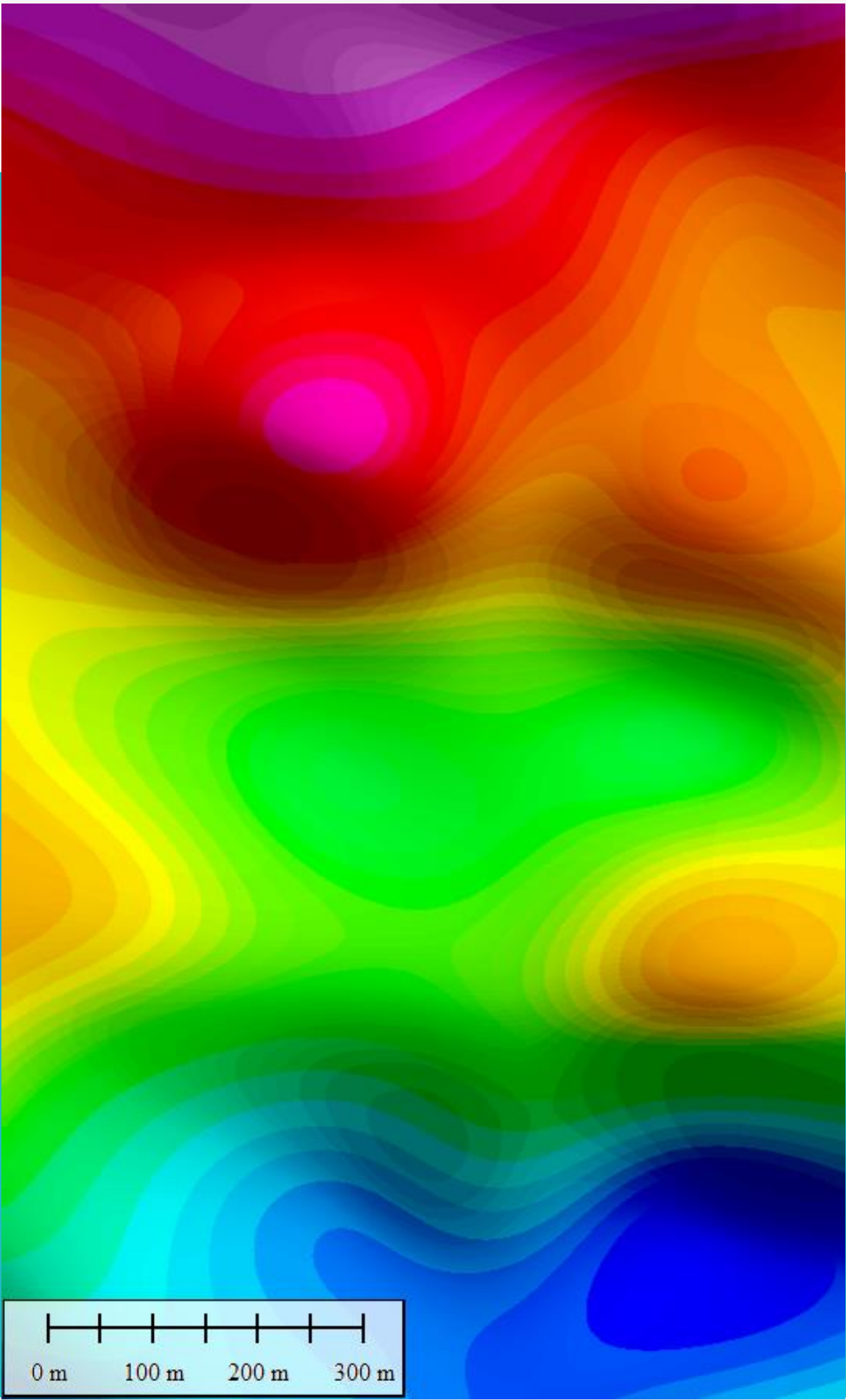
# Eureka Project High-resolution, UAV-based magnetic surveys

Zone 1-4

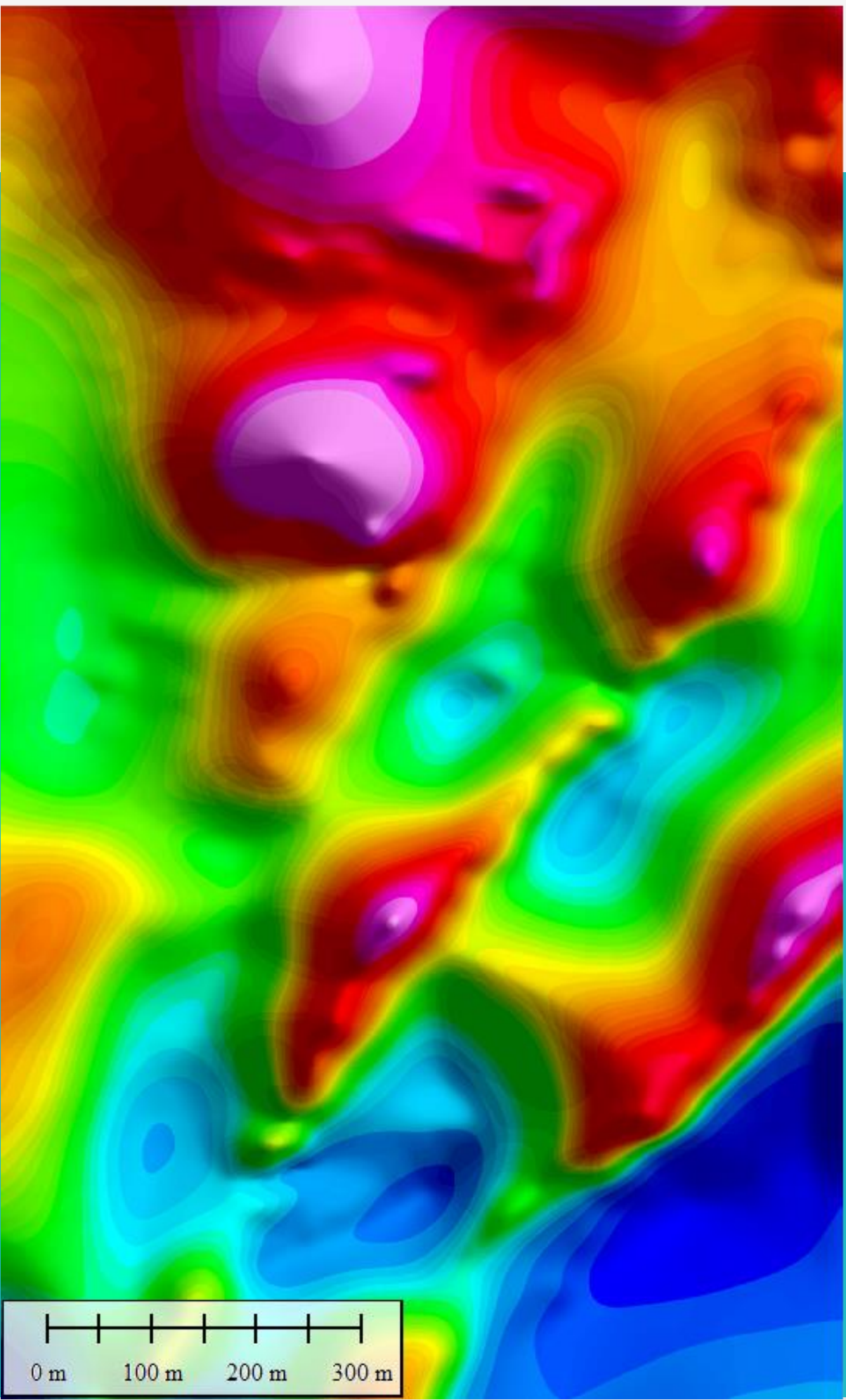


\*Regional TMI  
(Total Magnetic Intensity)

\*All regional magnetic data supplied by the  
Namibian Ministry of Mining and Energy.



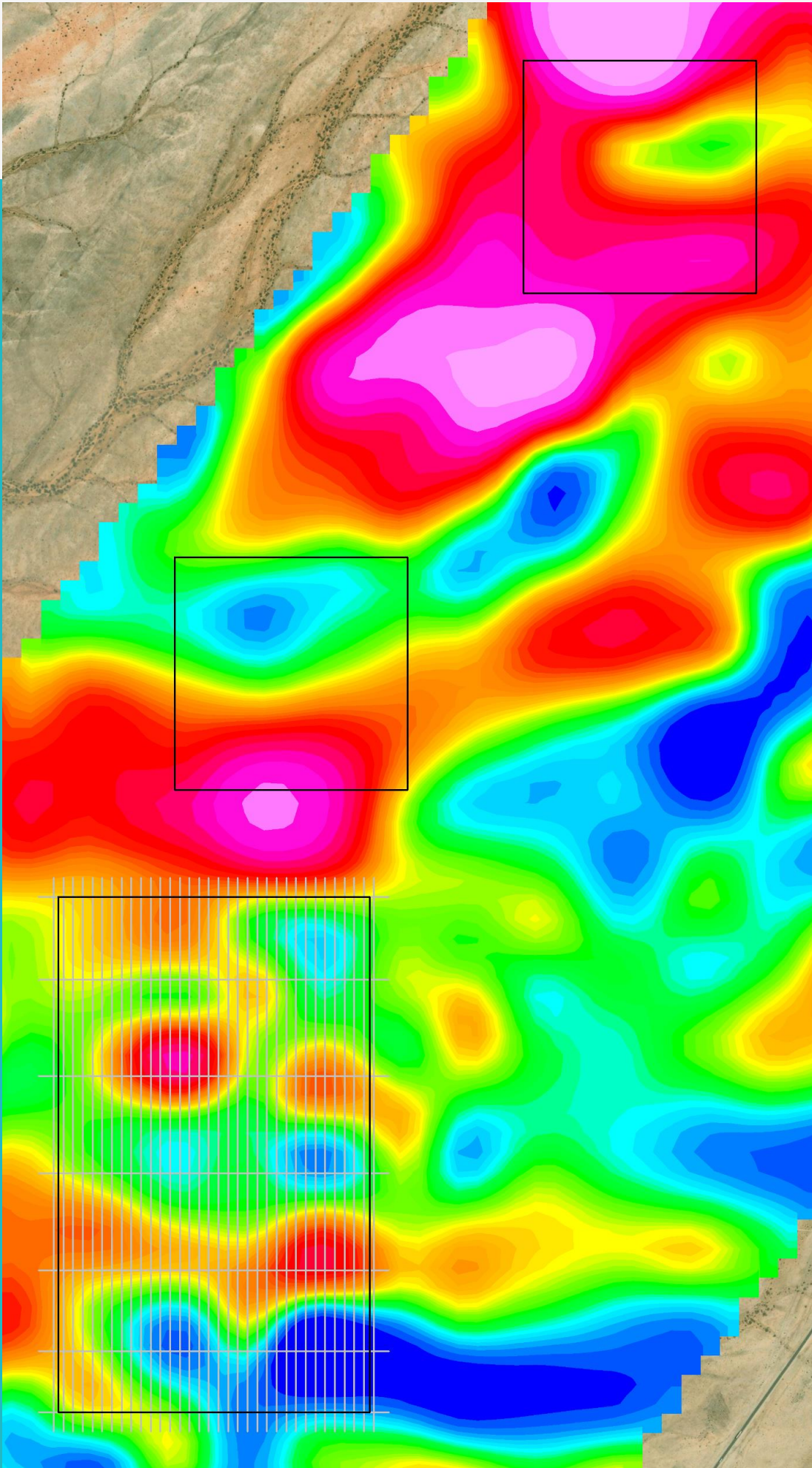
Drone TMI  
(Total Magnetic Intensity)  
with significant more resolution





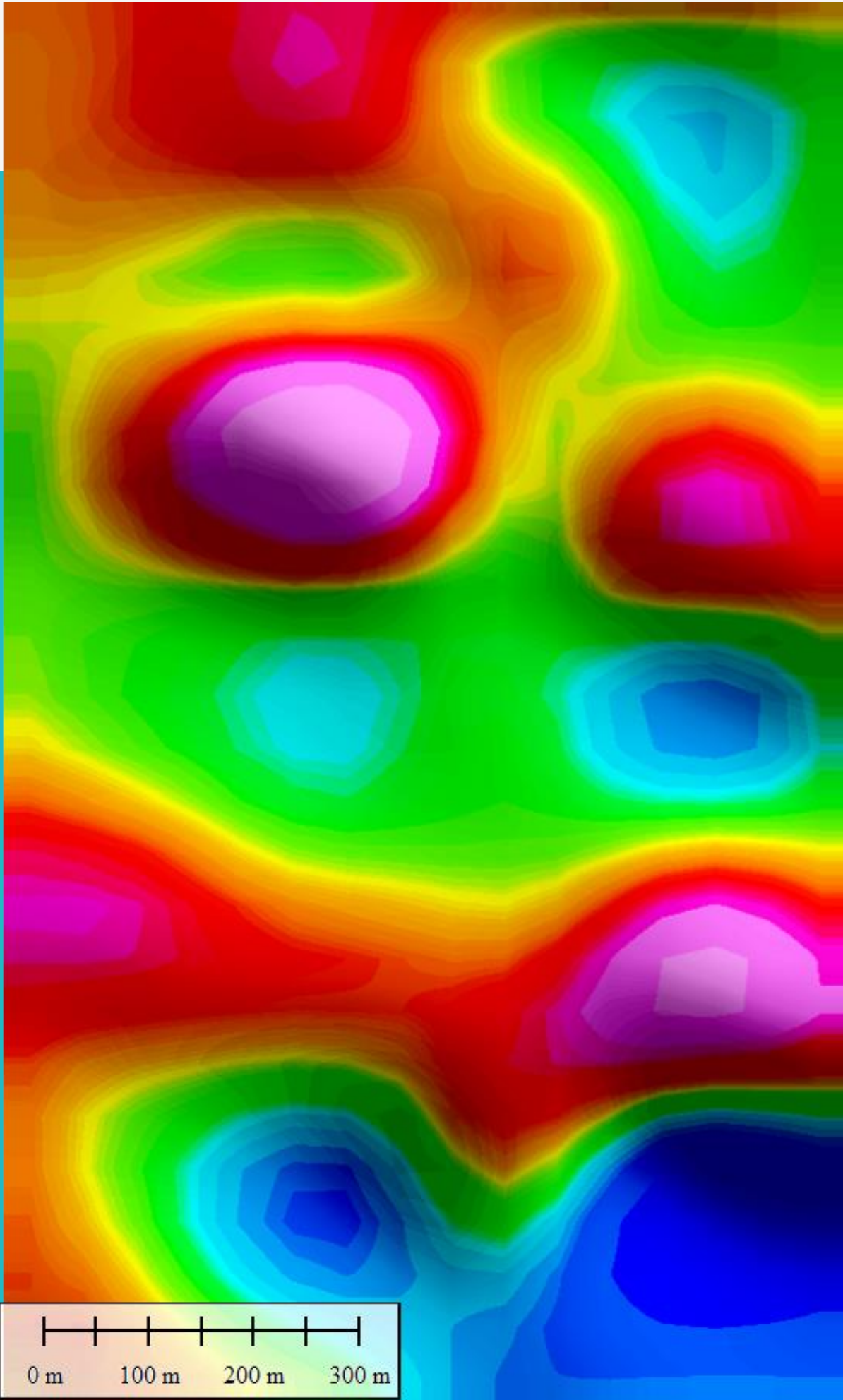
# Eureka Project

Zone 1-4

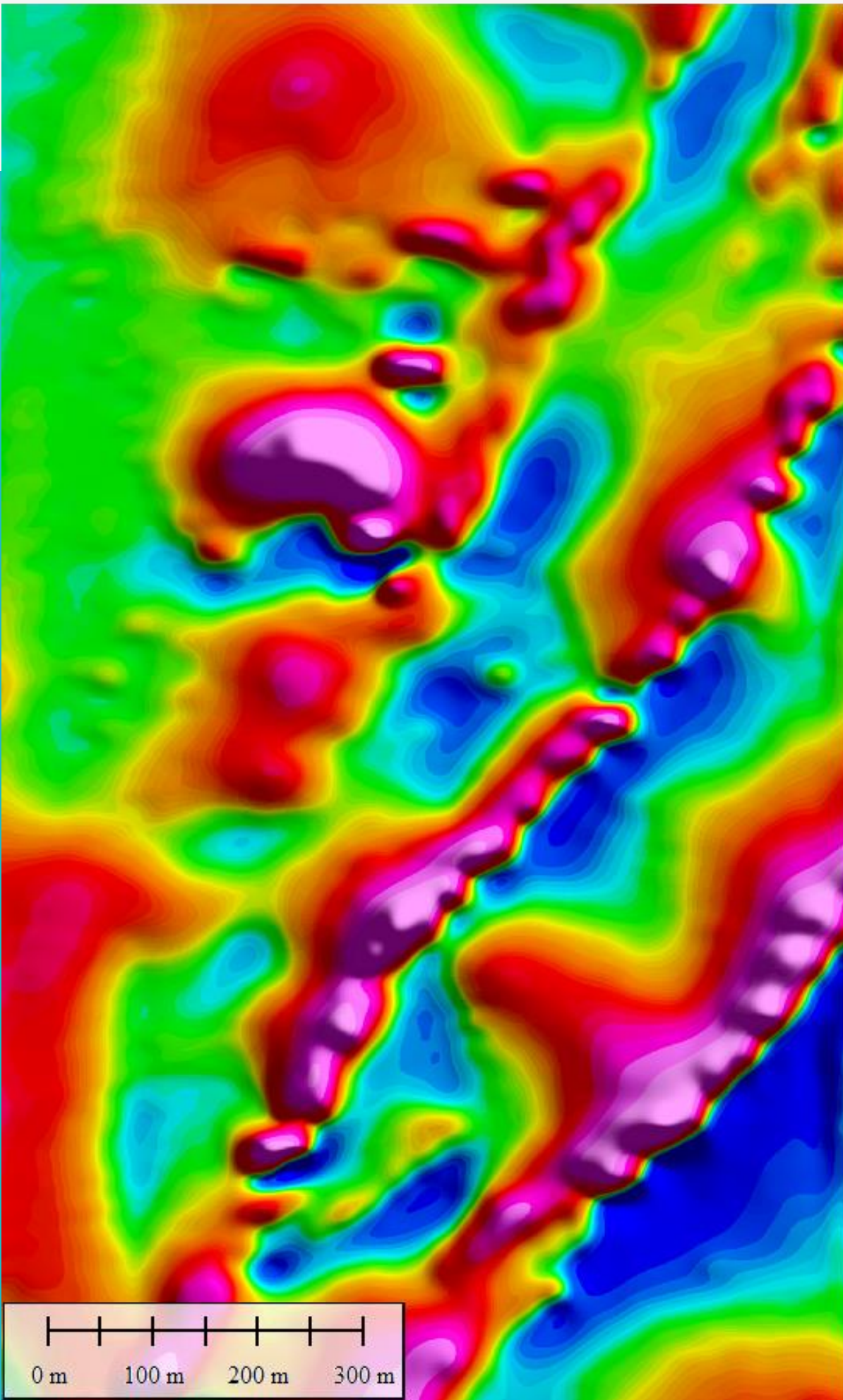


\*Regional 1-vd  
(Vertical Derivative)

\*All regional magnetic data supplied by the  
Namibian Ministry of Mining and Energy.



Drone 1-vd  
(Vertical Derivative)  
indicating NW magnetic dykes

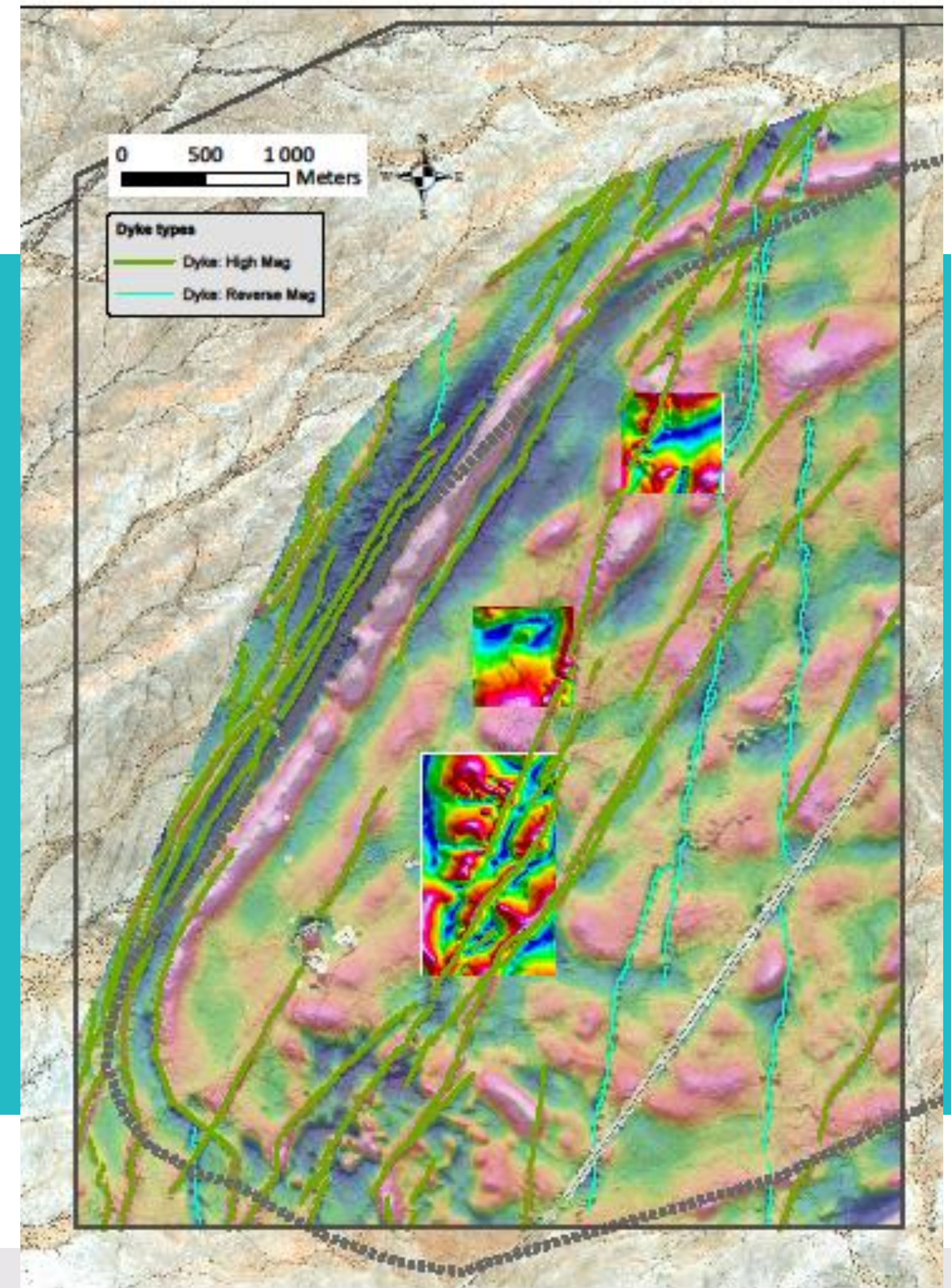




# Preliminary Results of UAV magnetic survey at Eureka

- Phase 1 magnetic surveys to test efficiency in detecting monazite mineralization
- First results identify clearly delineating NW-striking zones correlating with known drill-proven mineralization in very high detail

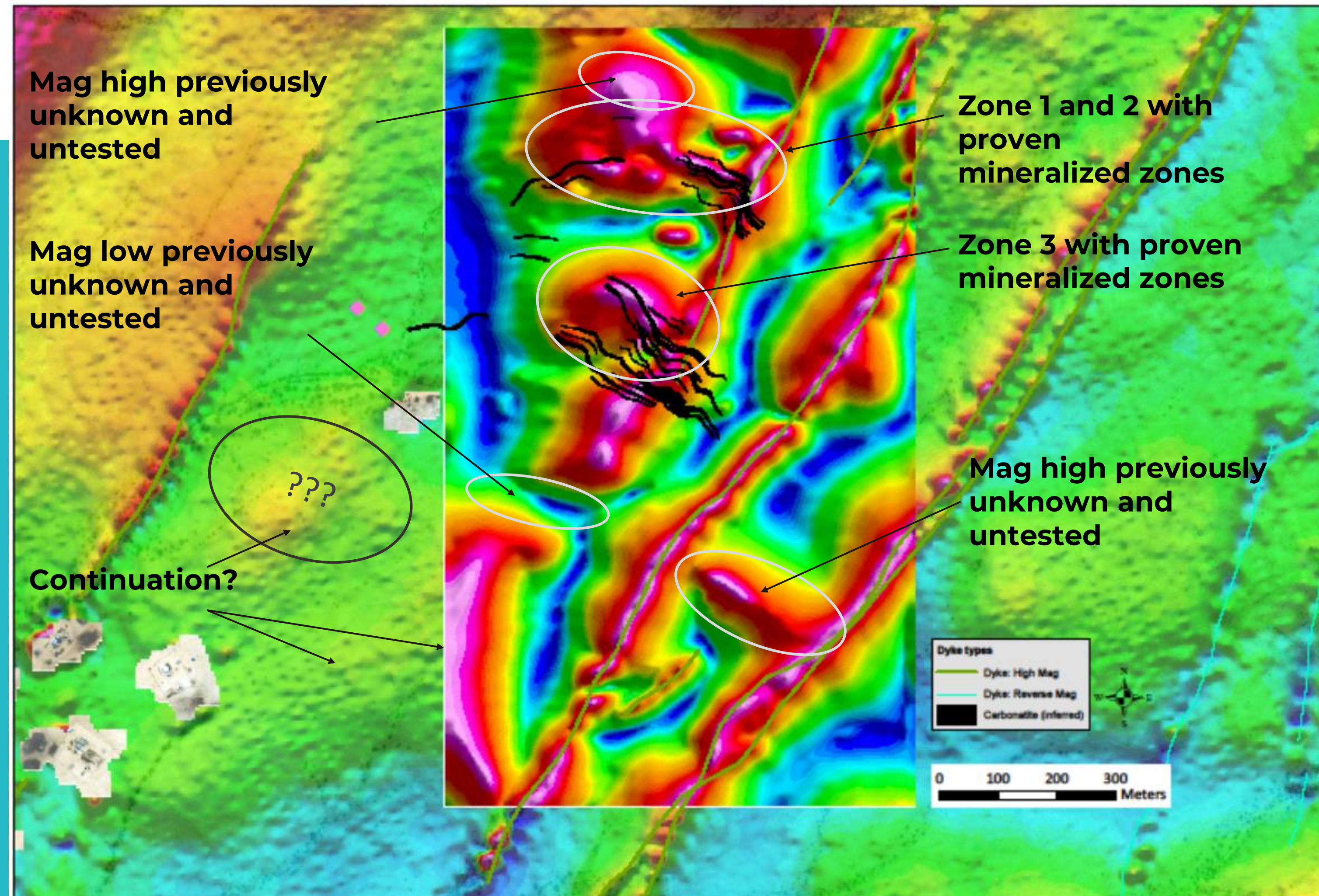
Phase 1 UAV mag survey areas on EPL6762





# Central Eureka Zones

- New data show previously unknown and untested NW-striking structures at Eureka Central, expressed as either mag highs or mag lows
- Previous mapping of inferred carbonatite dykes correlate with WNW to NW-striking magnetic anomalies



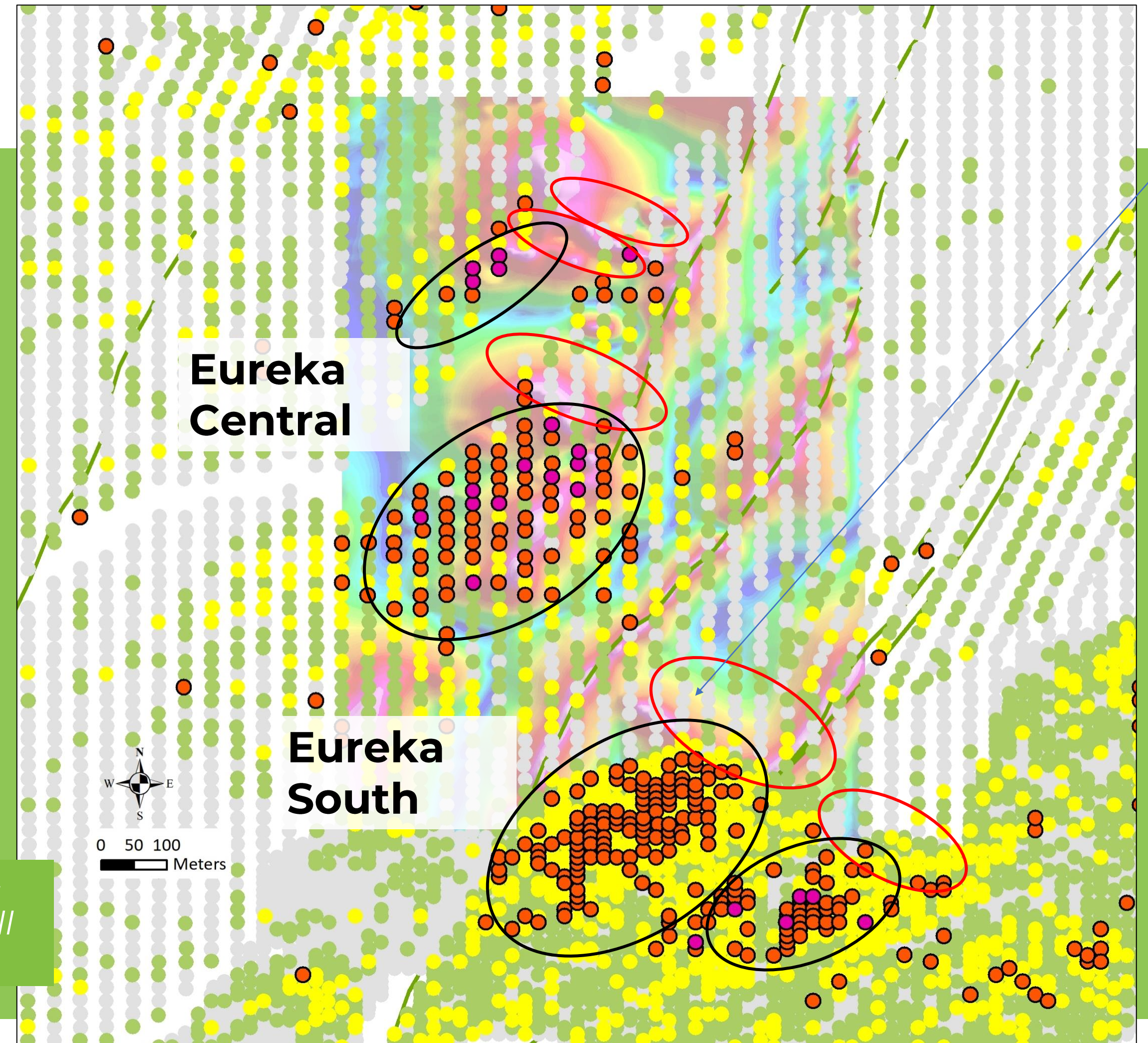
Flightec 2023 data set: PMC RTP Tilt



# Eureka Geochem/Mag survey combined – interim results

- Formation of a SW tail from sub-cropping mineralization is clearly expressed at Eureka Central.
- **The expected target for primary mineralization at Eureka South seems to coincide with the linear NW-trending magnetic feature from the recent drone survey**
- Target is located just to the northeast of the previous drill collars (see previous slide).

*This is an initial interpretation - there will be more detail when all data is properly assessed*

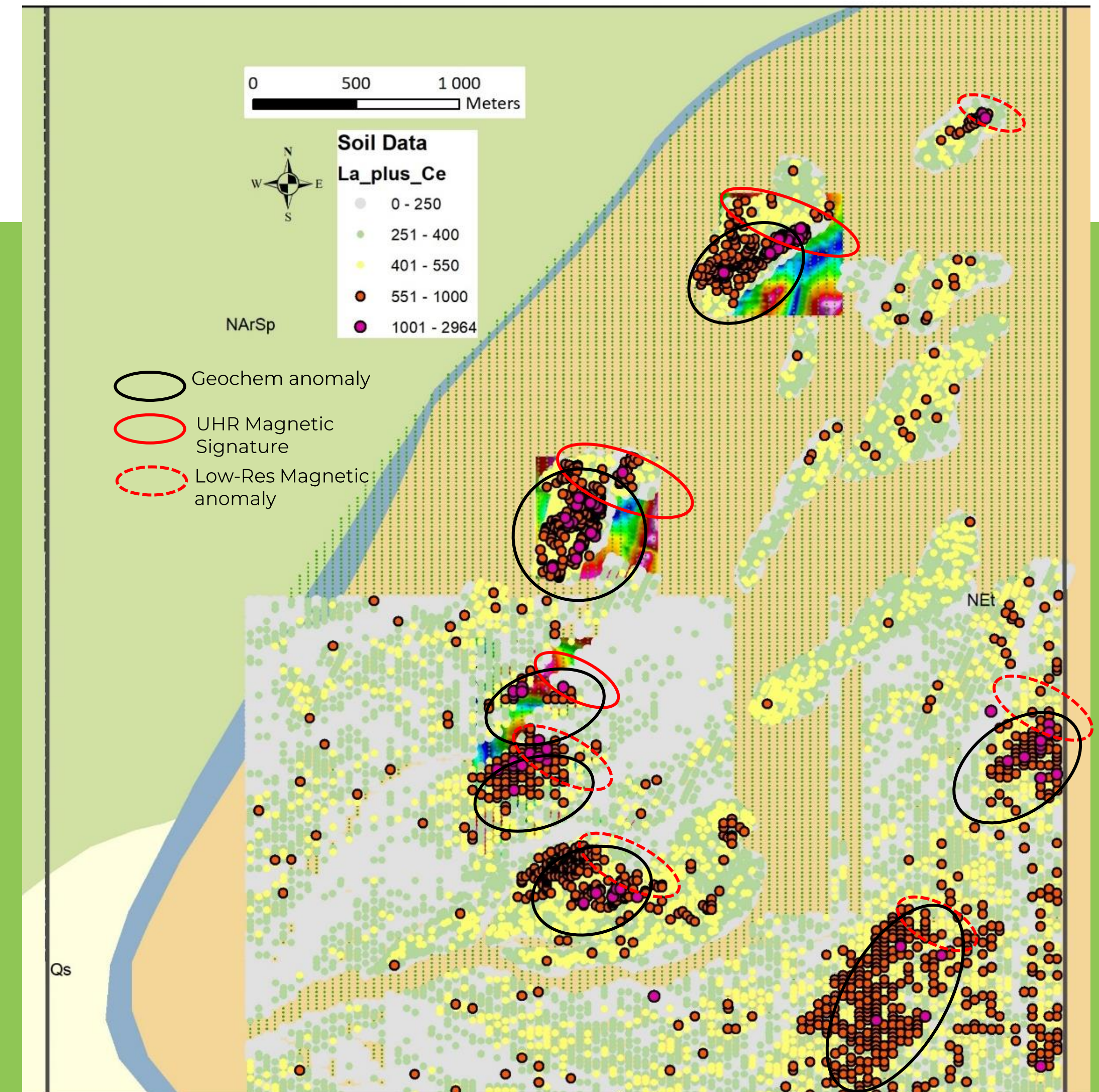




# New Target Generation Model

Sequence for drill targeting:

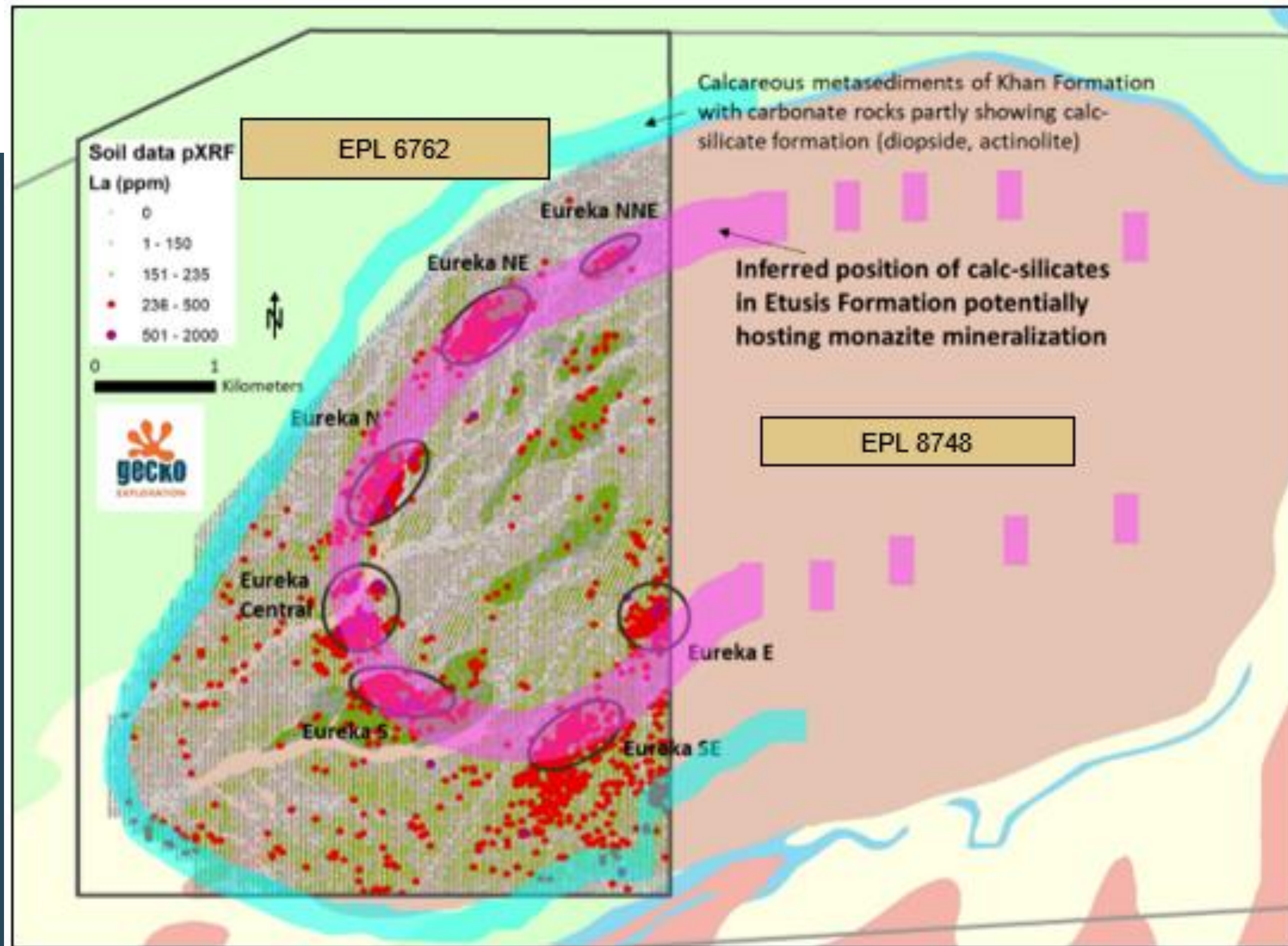
- + Identify REE Geochem signature size, intensity
- + Establish trend of soil migration
- ? Confirm mag anomaly up trend
- ➔ Model mag data
- + Ground truth target area for monazite
- + Trenching
- ➔ Drilling





# Regional picture

- Geochem data puts Eureka Central (Zone 1-3) into perspective
- **New targets qualitatively and quantitatively of a similar order** of magnitude, presenting highly prospective new targets
- REE soil anomalies seem to follow a **specific pattern and position within the sedimentary sequence or dome structure based on:**
  - Stratigraphic control within the Etusis Formation (sedimentary carbonates or volcanoclastics)
  - Structural control in a specific position within the Eureka Dome
- A confirmed stratigraphy-control of mineralization will allow for focussed further exploration on Eureka and the new EPL8748





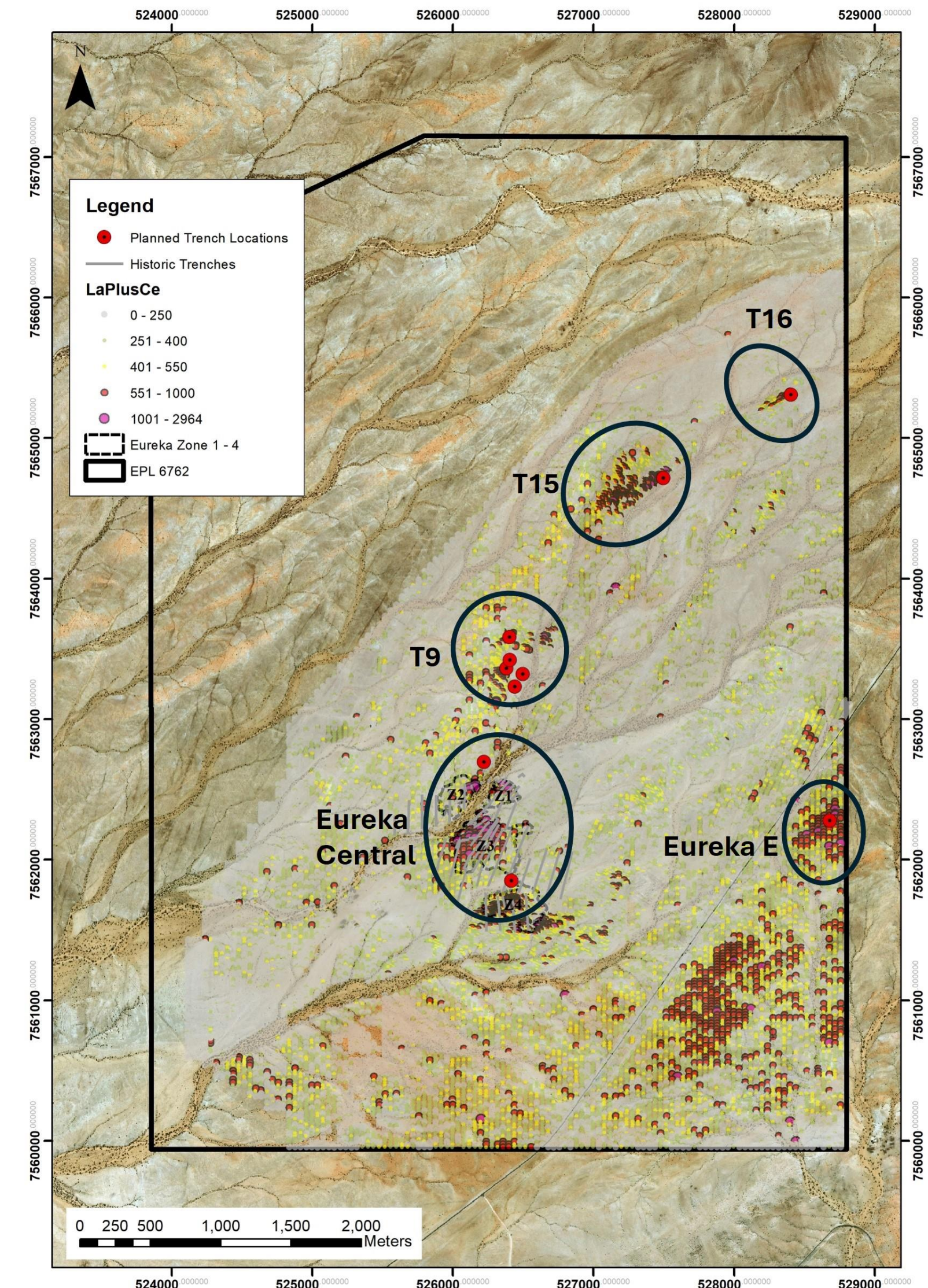
# 2024 Trenching program results

## Ongoing:

- Target validation on EPL 6762
- Ground Truthing new targets (early positive results)
- Reconnaissance exploration on EPL 8748
- Metallurgical test work
- Data Analytics for precision targeting

## Next Steps:

- Initiate trenching EPL 6762
- Existing Data analytics EPL 8748
- 2024 drill program development





# Priority target generation, ground truthing and validation

The program revealed significant rare earth oxide mineralization across multiple locations within Exclusive Prospecting License (“EPL”) 6762.

- The trenching program results continue to confirm the Company’s new exploration model.
- Early results support the concept of a large-scale, stratigraphic, and structural corridor within the Eureka Dome which hosts the rare earth mineralization (see news release: February 6, 2024).
- Four out of the five new targets confirmed rare earth mineralization.
- 18 out of the 19 focussed trenches (639 meters) intercepted rare earth elements bearing monazite mineralization similar to that found in the Eureka Central discovery deposit.

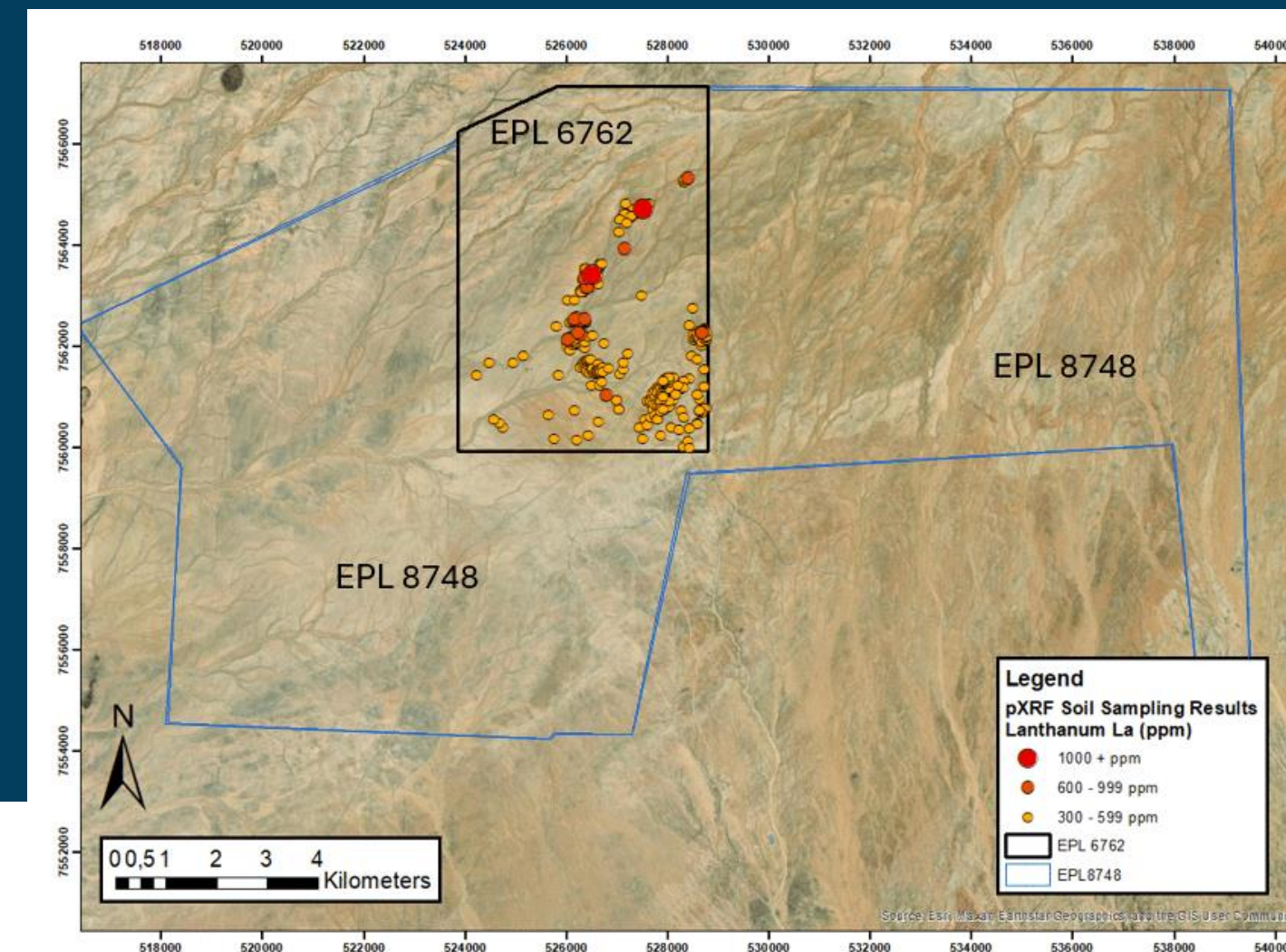


Figure 1: Rare earth element anomalies on EPL 6762.

Mar 21, 2024

E-Tech Resources Confirms Rare Earth Mineralization in Over 90% of Trenches at Eureka Property in Namibia

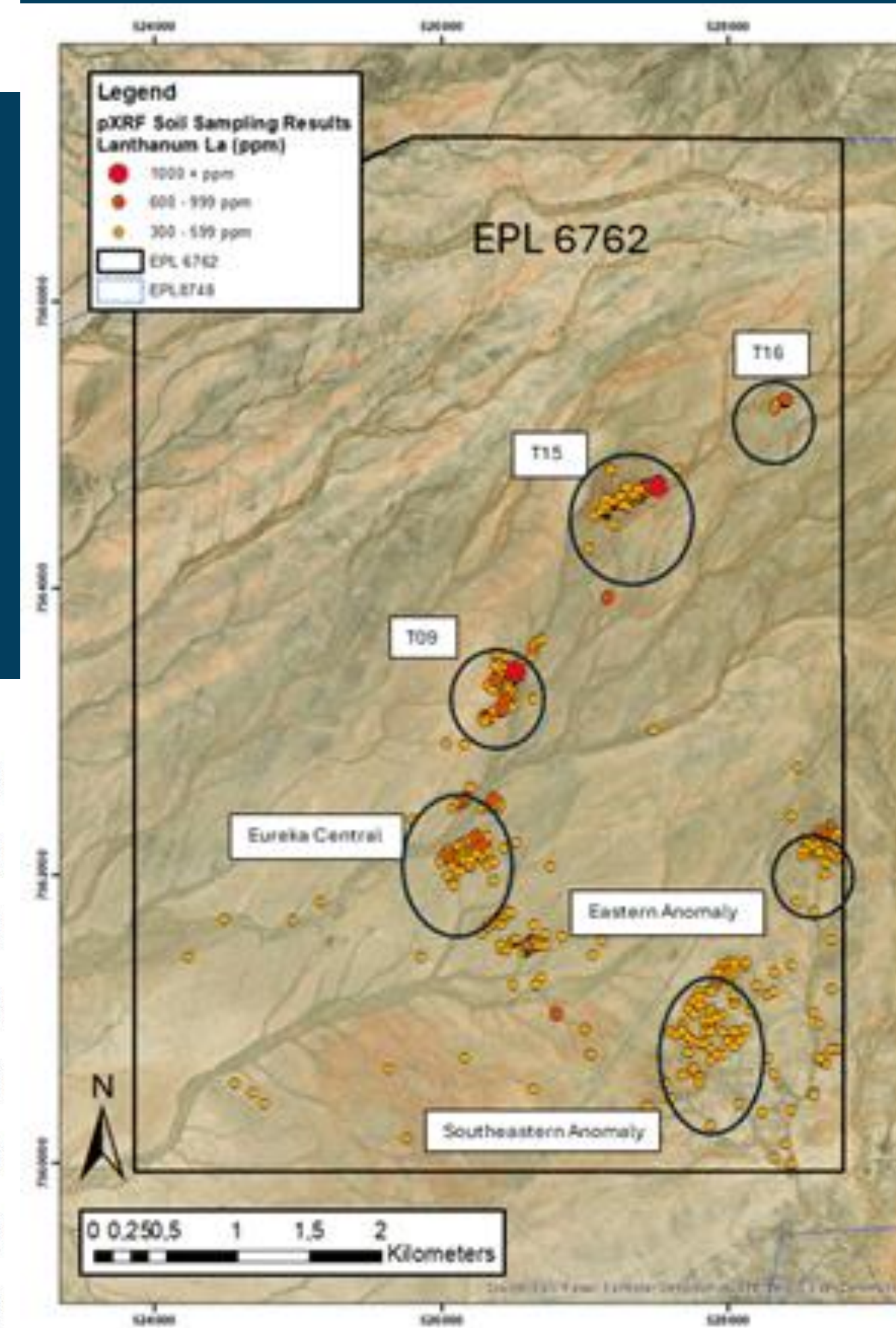


Figure 2: QI Trenching program targets and visible monazite from T071B (Target 9) and T077 (Target 16).





# SUMMARY

The high grade  
REE mineralization

Simple mineralogy  
with monazite

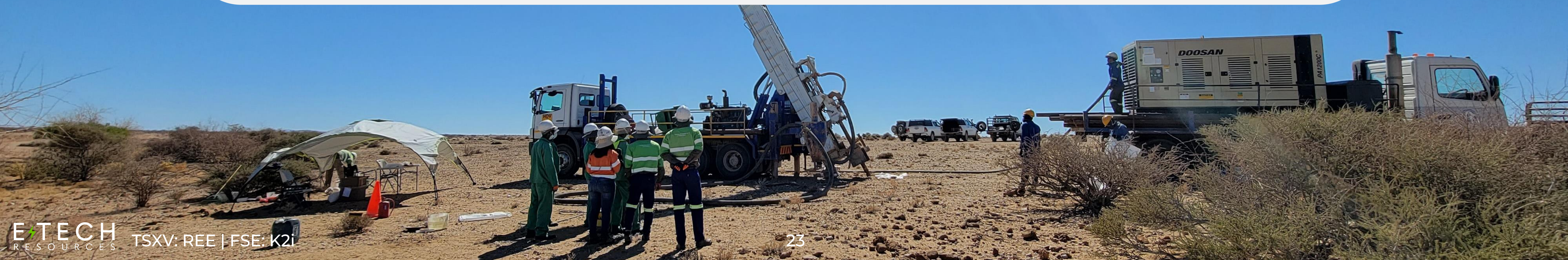
Coarse crystalline  
monazite is amenable  
to simple and cost-  
effective processing

New targets of  
similar scale to  
proven EPL 6762  
occurrences

Excellent accessibility  
& infrastructure and  
no community issues

No environmental red  
flags, Namibia as  
investment destination

Greenfield exploration  
potential on EPL 8748





# Sustainability

## COMMITTED TO RESPONSIBLE ENVIRONMENTAL, SOCIAL & CORPORATE GOVERNANCE

 <p>3 GOOD HEALTH AND WELL-BEING</p>	 <p>4 QUALITY EDUCATION</p>	 <p>8 DECENT WORK AND ECONOMIC GROWTH</p>	 <p>9 INDUSTRY, INNOVATION AND INFRASTRUCTURE</p>
Health & Safety	Jobs & Education	Best Practice & Transparency	Value Chain Management
 <p>10 REDUCED INEQUALITIES</p>	 <p>11 SUSTAINABLE CITIES AND COMMUNITIES</p>	 <p>12 RESPONSIBLE CONSUMPTION AND PRODUCTION</p>	 <p>15 LIFE ON LAND</p>
Inclusiveness & Fairness	Community Support	Efficient Consumption	Environmental Care



**PROF FRANCES WALL**  
DIRECTOR | UK

Dr. Wall has led large consortium research projects such as HiTech AlkCarb and SoS RARE and is currently Principal Investigator for the UK Research and Innovation Interdisciplinary **Circular Economy** Centre for Technology Metals (Met4Tech).

Dr. Wall is the Chair of the British Geological Survey Science Advisory Committee. Member of the UK Critical Minerals Expert Committee.







How is the project funded?

By 100% Equity Capital

Where are you listed?

We are dual listed: primarily on the TSX-V & co-listed on the Frankfurt Stock Exchange

Capital Structure

Issued & Outstanding		94,638,197
Options		4,060,000
Warrants		781,667

Market Capitalization

Share Price		C\$ 0.04
Market Cap		C\$ 3,785,528
Cash		~C\$ 317,711

COMPANY DETAILS

# Financials

As at 31 Dec 2023



# THANK YOU

Send us your questions:  
[contact@etech-resources.com](mailto:contact@etech-resources.com)

Follow our Social Channels:

